

Libra MAX Family



Base Stations

Libra MAX-LT

Single Sector Base Station

9120-1233 - Libra MAX-LT 3335
 9120-1234 - Libra MAX-LT 3436
 9120-1235 - Libra MAX-LT 3638
 9120-1258 - Libra MAX-LT 5800

Repeater Stations

Libra MAX-RBS

Rapid Backhaul System

9120-0280 - Libra MAX-RBS 3335
 9120-0281 - Libra MAX-RBS 3436
 9120-0284 - Libra MAX-RBS 3638
 9120-0283 - Libra MAX-RBS 5800

Subscriber Stations

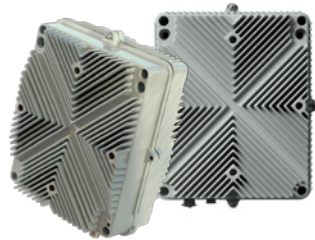
Libra MAX-SS

Fixed WiMAX Subscriber Station

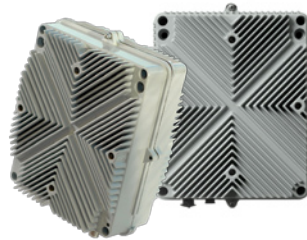
9120-0107 - Libra MAX-SS 3X000i17
 9120-0108 - Libra MAX-SS 3X000i20
 9120-0109 - Libra MAX-SS 3x000e
 9120-0110 - Libra MAX-SS 5X00i16
 9120-0111 - Libra MAX-SS 5X00i20
 9120-0112 - Libra MAX-SS 5X00i24
 9120-0113 - Libra MAX-SS 5X00e



Libra MAX-LT



Libra MAX-RBS



Libra MAX-SP



Libra MAX-SS

Network Management

Flexible WiMAX

Libra MAX, the most flexible WiMAX platform on the market, delivers a range of WiMAX compliant base station and subscriber station and accessory products with exceptional performance, scalability and coverage. EION's intelligent, field-proven backhaul and access wireless solutions let operators deliver innovative broadband services that are flexible and tailored to meet their subscriber needs. Operating in licensed and unlicensed WiMAX bands, Libra MAX Family of products provides a versatile platform for implementing WiMAX networks, and a pathway to increased service revenues and profits.



Family Benefits

1. EXTREMELY SCALABLE

- Libra MAX-RBS Rapid Backhaul System extends the reach of WiMAX hundreds of miles.
- The Libra MAX-SP, WiMAX/WiFi hotspot scales the system to WiFi customers in a single enclosure.
- Ease of base station expansion

2. RUGGED

- The base station enclosure and subscriber station enclosures are extremely rugged and thoroughly tested for mechanical vibrations, shake and bake and shock.
- Tested for temperature variance with temperature cycling for extreme hot and cold
- Tested for survivability in moist and wet atmosphere
- Industrial grade processor for making it work under extreme conditions
- FCC, CE, Industry Canada specs and European ETSI
- Integrated Lightning protection and surge protection

3. FLEXIBILITY

- EMS and NMS coexistence. ODU works either in stand alone mode using EMS or using centralized NMS for continued service without interruption
- Flexible to have base stations either sector IDU chassis based OR as stand alone for feeder deployment
- SoHo & Enterprise Class CPEs
- Single sector outdoor base station for small deployments and remote sites
- Multi-purpose Rapid Backhaul System (Libra MAX-RBS) extends sectors or creates mesh and ring topologies.
- A strong commitment to interoperability provides pricing flexibility to customers
- Ability to deliver different service classes to end users (QoE) Quality of Experience
- Secure management and control of client computers

4. REDUNDANCY

- Multiple sectors support multiple base stations in N+N mode
- Multiple subscriber stations in a single enclosure possible using single PoE interface

5. FAULT TOLERANCE

- Dual base stations in a single enclosure possible.
- High service availability.

6. INCREASED CAPACITY

- With dual subscriber stations, it is easy to double the throughput.
- Scalable to have more than 24 ODU's connected to chassis and managed through NMS



www.eionwireless.com

Corporate Headquarters
320 March Road, Suite 500
Ottawa, ON K2K 2E3
Canada
Phone: +1 (613) 271-4400
Fax: +1 (613) 271-7040

EION Wireless, a division of EION Inc., is a global provider of Broadband Wireless products that enable effective, economic and secure wireless high-speed communications solutions. As a Principal Member of the WiMAX Forum with several thousand broadband wireless installations, EION Wireless is committed to providing standardized, interoperable products based on 802.16 standards. The company's licensed and unlicensed frequency products are used by wireless ISPs, private network operators, and remote rural networks and in voice and data backhaul applications to solve last mile challenges. EION Wireless works with more than 165 worldwide channel partners to support its diverse global customer base.