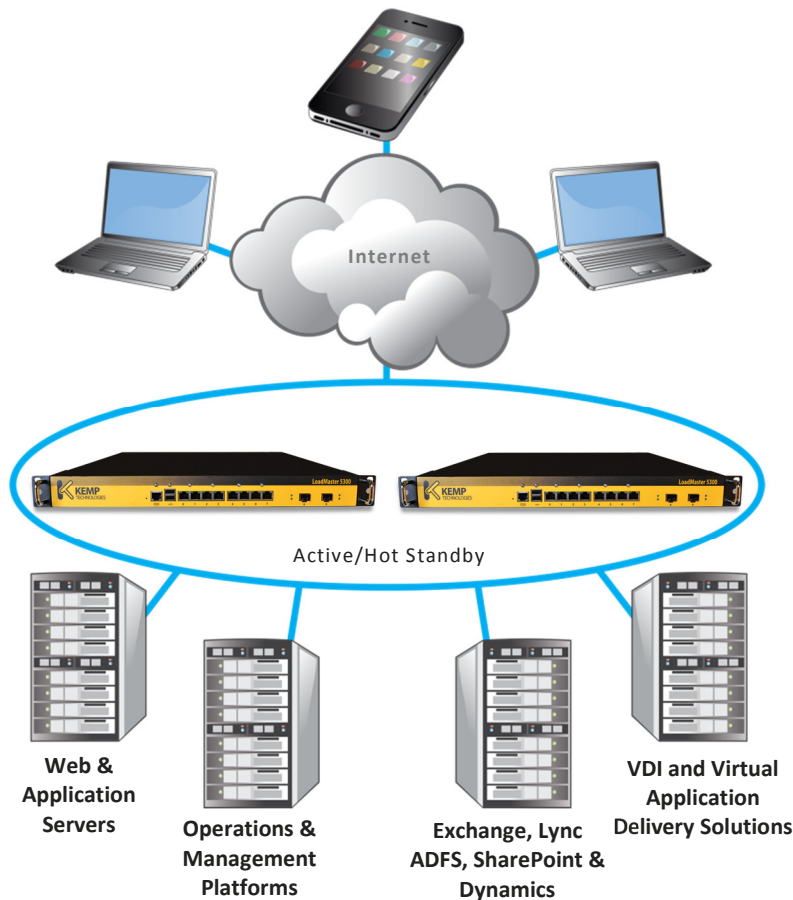


- ◆ Application Delivery Optimization
- ◆ Server Load Balancing
- ◆ SSL Acceleration



**#1 Load Balancer**  
in price/performance



Load balance up to 1,000 servers and 1,000 virtual clusters per LoadMaster™



## What is the LoadMaster™ ?

The LoadMaster™ is an **advanced Layer 4-7** load balancing and content switching **application delivery controller**. Integrated ASIC-based SSL Acceleration, advanced software optimization and Enterprise application integration allows the LoadMaster™ to intelligently and efficiently distribute user traffic and make applications perform better.

The LoadMaster™ is an **essential component** to include **for the high availability** of critical application infrastructures in the modern datacenter.

Combining the latest advancements in Layer 4-7 application delivery technology with support for high-performance hardware and virtualization platforms, the **LoadMaster™ is THE load balancer of choice** for providing high availability services in web, application and cloud infrastructures.

Investment Protection	Cost Containment	Ease of Use
<ul style="list-style-type: none"> <li>▪ A single LoadMaster™ can support up to 1,000 servers, offering scalability for growing environments.</li> <li>▪ Time-tested software optimized to take advantage of the underlying hardware or hypervisor platform ensures reliability and highly available access to business critical applications.</li> <li>▪ Advanced Application Delivery and security optimization features like content switching, caching, edge security, data compression, intrusion prevention and SSL acceleration provide all of the functionality needed for the modern application infrastructure.</li> <li>▪ Native support for Enterprise applications such as Microsoft Exchange, Lync, SharePoint, RDS and the VMware Horizon suite makes LoadMaster™ the load balancer of choice for critical applications.</li> </ul>	<ul style="list-style-type: none"> <li>▪ With competitive pricing and unbeatable performance to cost ratio, the LoadMaster™ allows for shortened realization of ROI and is a clear leader in the application delivery market.</li> <li>▪ Comprehensive product maintenance and support included for the first year with every LoadMaster™ lowers the cost of acquisition and TCO.</li> <li>▪ Key functionality included in every LoadMaster's base price provides the most comprehensive feature set in the industry – further lowering TCO.</li> <li>▪ With low overhead for training, administration and setup, LoadMaster allows for the quickest time to market for line of business and corporate-wide applications and web services.</li> </ul>	<ul style="list-style-type: none"> <li>▪ All LoadMasters come with an intuitive and simple to use Web User Interface (WUI) and CLI, enabling administrators to easily configure, maintain and integrate LoadMaster™.</li> <li>▪ Wizard-driven setup and optimized configuration templates allows LoadMaster™ to be easily deployed in existing traditional datacenter and hybrid cloud infrastructures without the need for complex and time consuming implementation and reconfiguration of the environment.</li> <li>▪ Secure SSH and HTTPS WUI remote access, real time performance and availability metrics, SNMP support and REST API allows LoadMaster™ and the applications it supports to be easily managed and monitored to ensure the health and performance of the environment.</li> </ul>



\* Specifications are subject to change without prior notice.

LoadMaster™ Feature	ADC, Hardware Appliances					ADC, Virtual Appliances <sup>1</sup>			
LoadMaster Model P/N	LM-2400	LM-2600	LM-3600	LM-5300	LM-R320	VLM-200	VLM-1000	VLM-2000	VLM-5000
<b>Performance &amp; Specifications</b>									
Max Balancer Throughput	1.2 Gbps	1.7Gbps	3.4Gbps	8.8Gbps	7Gbps	200Mbps	Unrestricted	2Gbps	5Gbps
SSL Transactions per Second (TPS)	1,000	2,000	5,000	9,300	8,000	200	1,000	1,000	10,000
Integrated SSL ASIC	n/a	✓	✓	✓	n/a	n/a	n/a	n/a	n/a
Requests per second (http)	50,000	69,000	77,000	110,000	96,000	35,000 <sup>2</sup>	35,000 <sup>2</sup>	35,000 <sup>2</sup>	35,000 <sup>2</sup>
L4 Concurrent Connections	4,300,000	8,600,000	12,800,000	25,600,000	25,600,000	3,000,000 <sup>2</sup>	3,000,000 <sup>2</sup>	3,000,000 <sup>2</sup>	3,000,000 <sup>2</sup>
Max Servers Supported/Virtual IPs	1,000/256	1,000/500	1,000/1,000	1,000/1,000	1,000/1,000	1,000/256	1,000/1000	1,000/1000	1,000/1,000
Network Ports	4 x GbE	4 x GbE	8 x GbE	8 x GbE and 2 x 10Gb (SFP+)	6 x GbE and 2 x 10Gb (SFP+)	n/a	n/a	n/a	n/a
Rack Mountable	1U	1U	1U	1U	1U	n/a	n/a	n/a	n/a
Solid State Storage	✓	✓	✓	✓	✓	n/a	n/a	n/a	n/a
Power Supply (Watts)	200	200	200	2 x 200 Hot swap	2 x 350 Hot swap	n/a	n/a	n/a	n/a
<b>Key Features</b>									
Layers 4-7 Load Balancing	✓	✓	✓	✓	✓	✓	✓	✓	✓
Content Switching	✓	✓	✓	✓	✓	✓	✓	✓	✓
Caching & Compression	✓	✓	✓	✓	✓	✓	✓	✓	✓
Intrusion Prevention	✓	✓	✓	✓	✓	✓	✓	✓	✓
Edge Security	✓	✓	✓	✓	✓	✓	✓	✓	✓
GSLB Load Balancing	✓	✓	✓	✓	✓	✓	✓	✓	✓
API-Based Administration	✓	✓	✓	✓	✓	✓	✓	✓	✓

1. Actual performance dependent upon resources allocated to the Virtual LoadMaster.

2. As tested w/1GB allocated memory and 1 vCPU.