

LPM LEDPatch Digital Patch System



- Supports Speeds up to 10 Mbps
- Front Panel (LED) Activity Display for each Circuit
- Patches 24 RS-232, 24 RS-530 and 20 V.35 leads
- Transparent to all Data Path Signals
- Patching Mechanism has Gold-on-Gold wiping action
- Test Module has 10 LED Activity Indicators



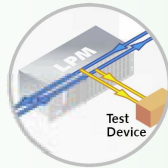
**See Page 2
for replacement model.**

Executive Overview

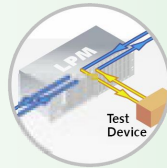
The LPM LEDPatch is a Digital Patch System which supports speeds up to 10 Mbps with RS-232/V.24, RS-530/422 and V.35 interfaces. A single LPM chassis supports sixteen circuit modules and one test module.

Each circuit module has five front panel LED activity indicators for SD, RD, CD, DTR and RTS. Gold-plated, self-wiping contacts ensure reliability. The test module displays ten activity LEDs of a specific interface with associated test points, a lamp test push button, and a DB 25 monitor port for optional external equipment.

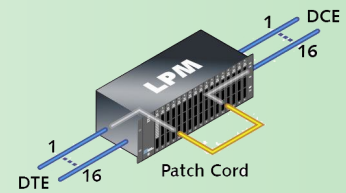
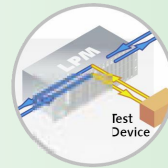
A dedicated V.35 LEDPatch System is configured with type MRC/Winchester connectors.



Monitoring of data traffic with a scope



Intrusive breaking of the connection to implement network and controller testing



Any to any circuit reconfiguration

Chassis: MKT-076-03532: LPM F/F System; DB-25 Connector	Patch Module: MKT-076-03532: LPM F/F System; DB-25 Connector
MKT-076-03540: LPM M/F System; DB-25 Connector	MKT-076-03540: LPM M/F System; DB-25 Connector
MKT-076-03534: LPM V.35 F/F System; MRC/Winchester Connector	MKT-076-03534: LPM V.35 F/F System; MRC/Winchester Connector
MKT-076-03541: LPM V.35 M/F System; MRC/Winchester Connector	MKT-076-03541: LPM V.35 M/F System; MRC/Winchester Connector

Test Module: MKT-076-03497: RS-232	Power Supply: MKT-071-01328: 110 Vac	Dimensions: DB-25 Chassis: 19" W (48.26 cm) x 5" D (12.7 cm) x 5.25" H (13.34 cm)
MKT-076-03499: RS-530	MKT-071-01330: 220 Vac	M-34 Chassis: 19" W (48.26 cm) x
MKT-076-03501: V.35		

Configured Systems:

RS-232:

- MKT-076-03535 - Consists of (1) MKT-076-03532, (1) MKT-076-03497, (16) MKT-03487 and (1) MKT-071-01328/30
- MKT-076-03536 - Consists of (1) MKT-076-03540, (1) MKT-076-03497, (16) MKT-03487 and (1) MKT-071-01328/30

RS-530/RS449:

- MKT-076-03537 - Consists of (1) MKT-076-03532, (1) MKT-076-03499, (16) MKT-03489 and (1) MKT-071-01328/30
- MKT-076-03538 - Consists of (1) MKT-076-03540, (1) MKT-076-03499, (16) MKT-03489 and (1) MKT-071-01328/30

V.35:

- MKT-076-03539 - Consists of (1) MKT-076-03534, (1) MKT-076-03501, (16) MKT-03492 and (1) MKT-071-01328/30
- MKT-076-03540 - Consists of (1) MKT-076-03541, (1) MKT-076-03501, (16) MKT-03492 and (1) MKT-071-01328/30

Cables:

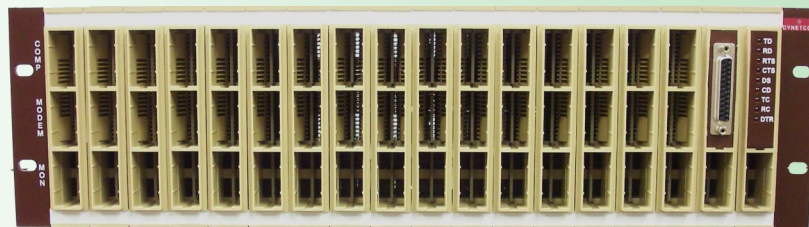
- CBE-076-02121 - Patch to Patch Cavity Cable - PVC Casing - Twisted Pair Conductors - 3 Feet
- CBE-076-02122 - Patch to Patch Cavity Cable - PVC Casing - Twisted Pair Conductors - 6 Feet



Mark II Dynapatch Digital Patch System



- Supports Speeds up to 10 Mbps
- Front Panel (LED) Activity Display for each Circuit
- V.24/V.35/X.21/RS-530/RS-574/G703/V.36 interface s
- Transparent to all Data Path Signals
- Bifurcated cobalt and gold plated patch contacts
- Monitor Module has 9 LED Activity Indicators
- No exposed contacts or latching mechanisms
- Fully modular
- Test and monitor access to circuits
- Dynapatch® lifetime guarantee



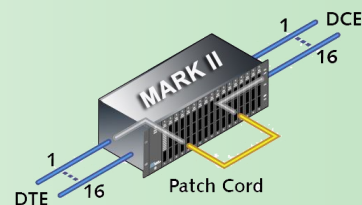
Executive Overview

The DynaPatch is a Digital Patch System which supports speeds up to 10 Mbps with RS-232/V.24, RS-530/422 and V.35 interfaces. A single DynaPatch chassis supports sixteen circuit modules, one Test Module and one Monitor Module.

The Economy Enhanced version of the DynaPatch has seven front panel indicators for RD, TD, CTS, CD, DTR, RTS and DSR. The Standard version includes LEDs on the Monitor Module only.

The Test Module includes two DB-25 ports for optional external equipment.

A dedicated V.35 DynaPatch System is configured with type MRC/Winchester connectors.



Any to any circuit reconfiguration

Chassis: PUL-20027L00002: Mark II Dynatech Standard Rack Adapter chassis

Patch Module: PUL-20020L00006: RS-232/RS-530 Patch Module
PUL-20955L00004: V.35 Patch Module

Test Module: PUL-2003L000002: RS-232
PUL-2003L000002: RS-530
PUL-GTCBL07758M : V.35

Monitor Module: PUL-2014L00002: RS-232 (110-240v)
PUL-2014L00012: RS-530

Dimensions: Chassis: 19" W (48.26 cm) x 5" D (12.7 cm) x 5.25" H (13.34 cm)

Configured Systems:

RS-232:

PUL-2093L030004- Consists of (1) PUL-20027L00002 Mark II Chassis, (16) PUL-20020L00006 RS-232 Patch Modules , (1) RS-232 PUL-2003L000002 Test Module and (1) RS-232 PUL-2014L00002 Monitor Module—Black

RS-530/RS449:

PUL-2093L030008- Consists of (1) PUL-20027L00002 Mark II Chassis, (16) PUL-20020L00006 RS-530 Patch Modules , (1) RS-530 PUL-2003L000002 Test Module and (1) RS-530 PUL-2014L00012 Monitor Module—Black

V.35:

PUL-2093L030004- Consists of (1) PUL-20027L00002 Mark II Chassis, (16) PUL-20955L00004 V.35 Patch Modules , (1) PUL-GTCBL07758M V.35 Test Module—Black

Cables:

PUL-GTCBL04737M- Patch to Patch Cavity Cable— 1 Meter
PUL-GTCBL06163M - V.24 Monitor Cord - 1 Meter
PUL-GTCBL06647M - V.35 Monitor Cord - 1 Meter

